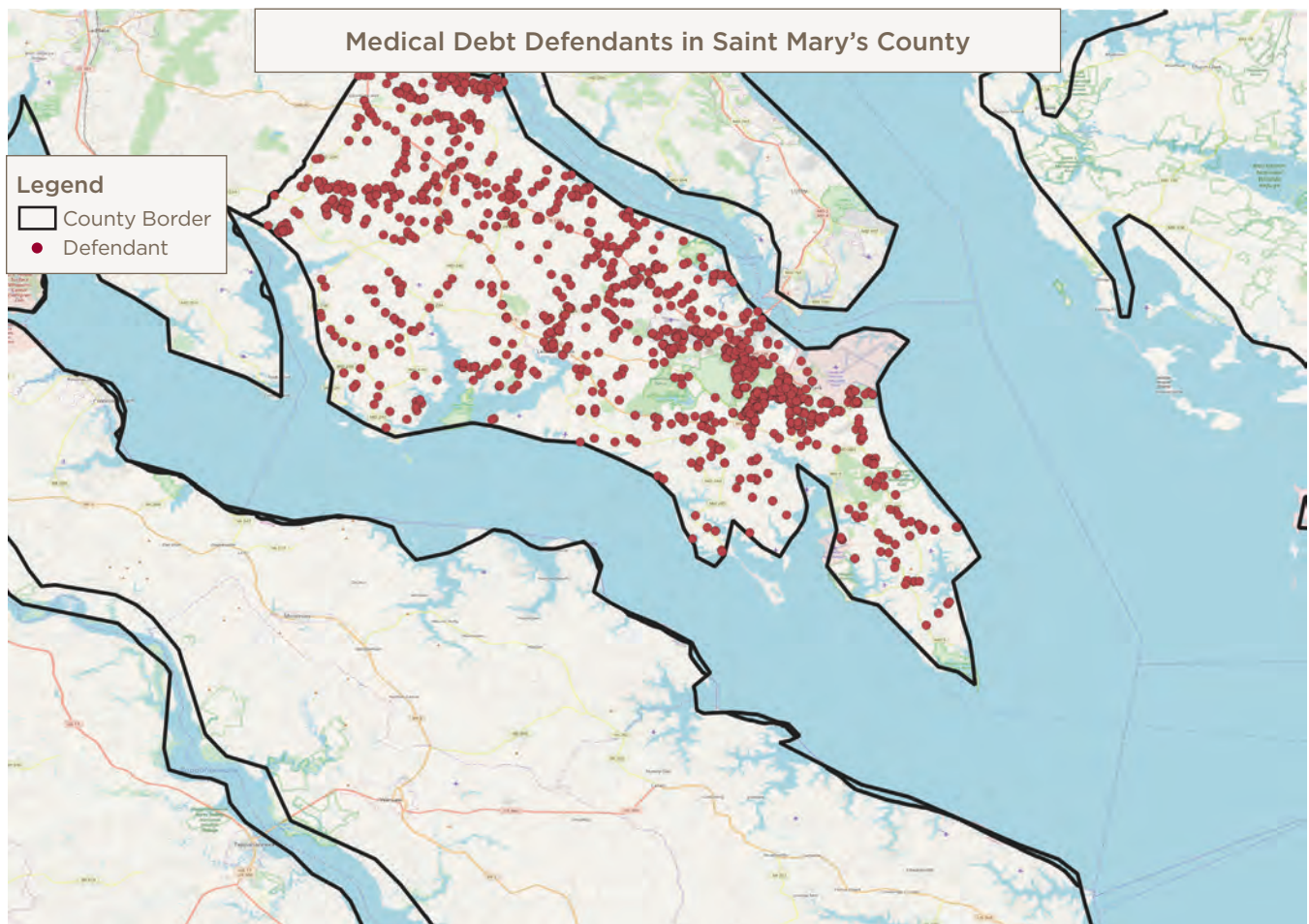


# SAINT MARY'S COUNTY MEDICAL DEBT LAWSUITS 2009 – 2018

## Medical Debt Lawsuits Filed Against County Residents<sup>1</sup>

Total medical debt lawsuits	1,880
Total amount of medical debt sought through lawsuits	\$2,673,450
Median amount of medical debt per lawsuit (meaning half the lawsuits were for less and half were for more)	\$808
Total cases involving wage and property garnishments	297
Total amount sought through garnishments	\$568,427

## Where Medical Debt Lawsuit Defendants Live



## Hospitals Filing Medical Debt Lawsuits Against County Residents

Hospital Name	System	Total Lawsuits	Amount	Median Amount	Garnishment Total	Garnishment Amount
MedStar St. Mary's Hospital	MedStar Health	1,407	\$1,424,564	\$714	231	\$393,724
University of Maryland Charles Regional Medical Center	University of Maryland Medical System	118	\$216,002	\$1,048	20	\$26,001
CalvertHealth Medical Center		117	\$177,522	\$1,007	16	\$25,514
MedStar Southern Maryland Hospital Center	MedStar Health	74	\$177,444	\$1,051	10	\$59,694
University of Maryland Medical Center	University of Maryland Medical System	63	\$399,597	\$2,660	4	\$13,723
Johns Hopkins Hospital	Johns Hopkins Health System	19	\$24,807	\$938	3	\$4,997
Johns Hopkins Suburban Hospital	Johns Hopkins Health System	13	\$51,911	\$1,132		
University of Maryland Capital Region Health at Laurel Regional and Prince George's Hospital	University of Maryland Medical System	12	\$46,667	\$1,867	7	\$37,314
Mercy Medical Center		9	\$7,750	\$829		
Greater Baltimore Medical Center		8	\$5,641	\$703	2	\$1,378
Johns Hopkins Bayview Medical Center	Johns Hopkins Health System	6	\$20,659	\$1,884	1	\$1,862
Sinai Hospital of Baltimore	LifeBridge Health	5	\$25,308	\$335	1	\$1,299
University of Maryland Shore Medical Center	University of Maryland Medical System	4	\$5,734	\$1,154		
Peninsula Regional Medical Center		3	\$1,923	\$873	1	\$150
University of Maryland Medical Center Midtown Campus	University of Maryland Medical System	3	\$5,935	\$1,423		
University of Maryland Rehabilitation & Orthopaedic Institute	University of Maryland Medical System	3	\$38,198	\$13,436		
MedStar Franklin Square Medical Center	MedStar Health	2	\$20,504	\$10,252		
MedStar Montgomery Medical Center	MedStar Health	2	\$2,270	\$1,135		
Saint Agnes Healthcare	Ascension Healthcare	2	\$2,319	\$1,160		

Hospital Name	System	Total Lawsuits	Amount	Median Amount	Garnishment Total	Garnishment Amount
Adventist HealthCare (only system info reported)	Adventist HealthCare	1	\$701	\$701		
Fort Washington Medical Center		1	\$651	\$651		
Holy Cross Hospital	Trinity Health	1	\$1,223	\$1,223		
Johns Hopkins Howard County General Hospital	Johns Hopkins Health System	1	\$2,771	\$2,771	1	\$2,771
MedStar Good Samaritan Hospital	MedStar Health	1				
MedStar Harbor Hospital	MedStar Health	1	\$342	\$342		
MedStar Union Memorial Hospital	MedStar Health	1	\$1,291	\$1,291		
Meritus Medical Center		1	\$3,391	\$3,391		
Northwest Hospital	LifeBridge Health	1	\$1,167	\$1,167		
University of Maryland Baltimore Washington Medical Center	University of Maryland Medical System	1	\$7,159	\$7,159		

## County Information<sup>2</sup>

Total Population	Individuals Living in Poverty	Children Living in Poverty	Median Household Income	Individuals Without Health Insurance	Unemployed	White	African American	Hispanic or Latino	Asian
107,806	8,839	2,952	\$86,508	6,289	2,374	81,098	15,282	5,252	3,002

## Medical Debt Lawsuits Victimize Low-Wage Workers

### Top four private-sector employers for wage garnishment victims:

- Dyncorp International
- BAE Systems Inc.
- Medstar
- LP Automotive Inc.

## Medical Debt Lawsuits Victimize Public Workers

### Top three public-sector employers for wage garnishment victims:

- Public Schools
- State of Maryland
- Federal Government Agencies

## Share of County Residents with Medical Debt in Collections<sup>3</sup>

- Overall: 14%
- White communities: 13%
- Communities of color: NA

### Executive Compensation for Top Hospitals Suing County Residents: Last Five Years<sup>4</sup>

Hospital Name	System	Total Executive Compensation	Number of Annual Payments to Executives	Number of Individual Executives	Number of Annual Payments More Than \$1 Million	Total Number of Payments That Put Executives in Maryland's Top 1%
University of Maryland Medical Center	University of Maryland Medical System	\$80,154,293	79	26	21	76
MedStar Southern Maryland Hospital Center	MedStar Health	\$72,872,613	64	24	20	35
MedStar St. Mary's Hospital	MedStar Health	\$57,472,375	68	23	7	37
University of Maryland Charles Regional Medical Center	University of Maryland Medical System	\$38,300,966	62	17	5	21
CalvertHealth Medical Center		\$18,495,224	61	22	1	6

### Net Income for Top Hospitals Filing Medical Debt Lawsuits in County: 2009 - 2018<sup>5</sup>

Hospital Name	System	Total Operating Revenues	Net Income
University of Maryland Medical Center	University of Maryland Medical System	\$12,606,743,000	\$692,657,000
MedStar St. Mary's Hospital	MedStar Health	\$1,410,237,991	\$88,542,767
University of Maryland Charles Regional Medical Center	University of Maryland Medical System	\$1,067,991,147	\$77,513,321
CalvertHealth Medical Center		\$1,396,539,843	\$60,794,408
MedStar Southern Maryland Hospital Center	MedStar Health	\$2,184,984,300	-\$29,264,600

## Profiting from Charity Rate Support<sup>6</sup>: Charity Rate Support Levels for the Top Hospitals Suing County Residents for Medical Debt, 2014 - 2018

Hospital name	System	Charity Care Provided — Last Five Years	Charity Care Rate Support Total — Last Five Years	Charity Care Rate Support Surplus*: Last Five Years	Rank: Largest Surplus* of Charity Rate Support
University of Maryland Medical Center	University of Maryland Medical System	\$179,526,226	\$205,952,948	\$26,426,722	2
MedStar St. Mary's Hospital	MedStar Health	\$13,164,421	\$16,134,544	\$2,970,123	15
CalvertHealth Medical Center		\$23,004,284	\$24,793,844	\$1,789,560	20
University of Maryland Charles Regional Medical Center	University of Maryland Medical System	\$9,572,552	\$10,546,193	\$973,641	25
MedStar Southern Maryland Hospital Center	MedStar Health	\$16,646,289	\$17,583,088	\$936,799	26

\*Amount received in excess of charity provided.

## Charity Care Denial Rates for the Top Hospitals Suing County Residents for Medical Debt: 2017 - 2018<sup>7</sup>

Hospital name	System	Licensed Beds	Application for Financial Assistance Received	Application for Financial Assistance Approved	Application for Financial Assistance Denied	Percent Denied
CalvertHealth Medical Center*		74	366	121	245	66.9%
University of Maryland Medical Center	University of Maryland Medical System	751	1,707	1,237	470	27.5%
University of Maryland Charles Regional Medical Center	University of Maryland Medical System	104	277	247	30	10.8%
MedStar Southern Maryland Hospital Center	MedStar Health	182	9,738	9,643	95	1.0%
MedStar St. Mary's Hospital	MedStar Health	109	9,979	9,886	93	0.9%

\*Only one year of data available.

## Endnotes

- 1 All data based on the following source except where noted: Analysis of the case records of the Maryland Judiciary, available here: Maryland Judiciary Case Search Disclaimer: <http://casesearch.courts.state.md.us/casesearch/inquiry-index.jsp>
- 2 U.S. Census Bureau, 2013-2017 American Community Survey 5-Year Estimates.
- 3 Debt in America: An Interactive Map. The Urban Institute. [https://apps.urban.org/features/debt-interactive-map/?type=auto&variable=autoopen\\_pct](https://apps.urban.org/features/debt-interactive-map/?type=auto&variable=autoopen_pct). Accessed 12/13/2019.
- 4 Source: Executive compensation was found on IRS Form 990 for appropriate years. Note: Multi-hospital systems often report the same executives on multiple 990 forms for individual hospitals.
- 5 Financial Information from audited financial reports, appropriate years.
- 6 Source: Maryland Health Services Cost Review Commission, Community Benefits Program, Maryland Hospital Community Benefit Financial Report: FY 2014 - 2018.
- 7 Source: Maryland Health Services Cost Review Commission, Annual Report of Revenue, Expenses, and Volumes, Supplemental Schedule VIII Debt Collection/Financial Assistance Report, <https://hsrc.state.md.us/Pages/ar-rev.aspx>